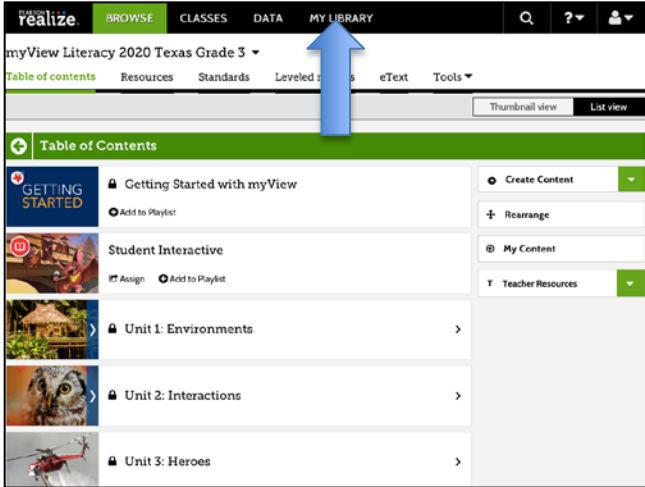
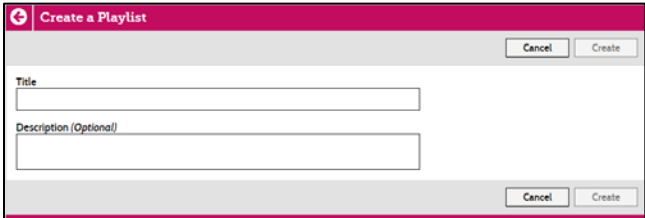
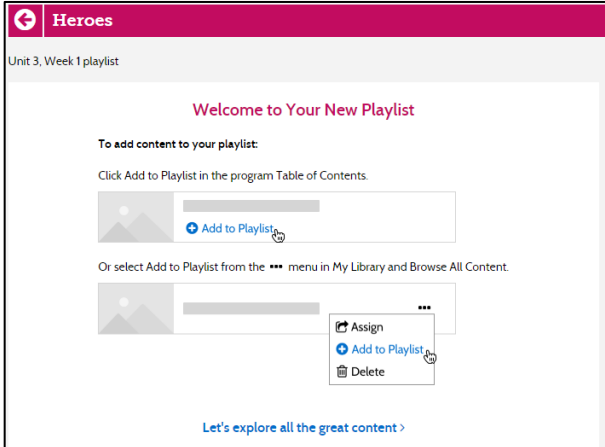
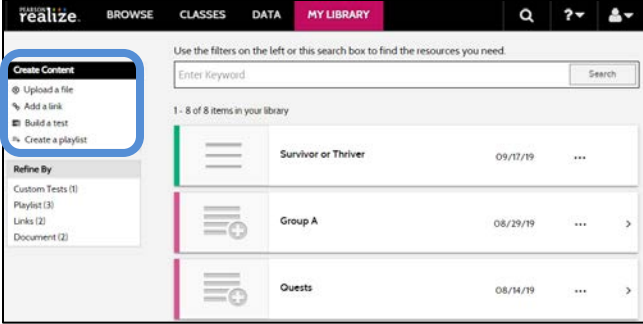


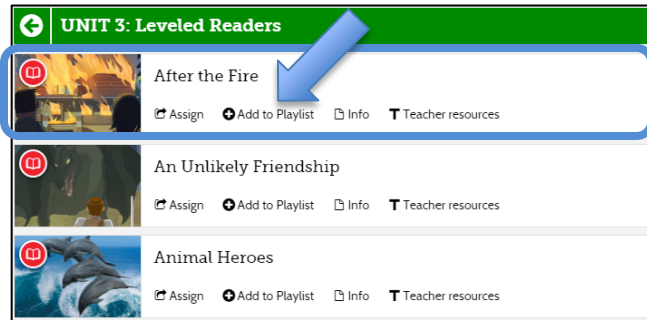
Playlists Digital Path

How do I create playlists that contain *myView Literacy* content and my own custom content?
Follow this path to find out!



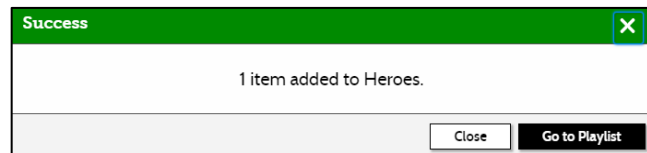
Digital Path	Click to Discover
<p>Sign in to PearsonRealize.com.</p>	<p>Click Sign In.</p>
<p>Create a playlist.</p>   	<p>Locate the Table of Contents for your grade level.</p> <p>Select My Library from the top menu bar.</p> <p>In the Create Content panel, select Create a playlist.</p>  <p>Enter a Title and Description for the playlist and click Create.</p> <p>A welcome page will appear. Click Let's explore all the great content. This will take you to the Programs page where you will select your grade level.</p> <p>If you need to create another playlist, click the back arrow to return to My Library.</p>

Add myView Literacy content to your playlist.



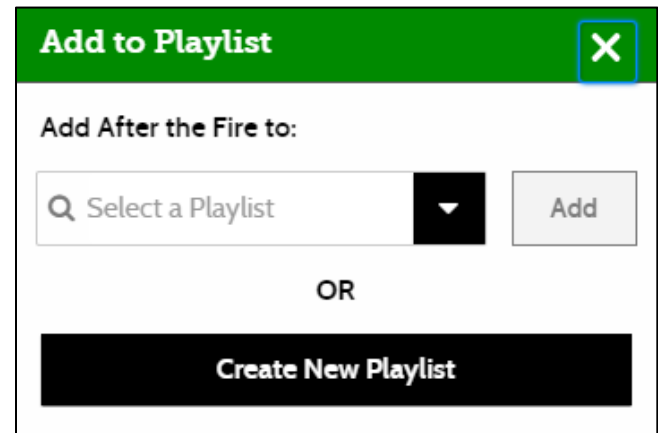
Select the playlist you want to add the content to from the drop-down menu or click **Create New Playlist** to add it to a new playlist.

After adding the content item to the playlist, click **Close** to return to the Table of Contents or **Go to Playlist** to view the playlist in My Library.

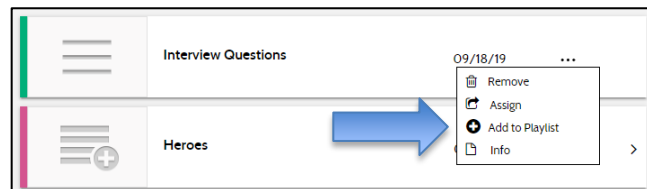


Add content items to your playlist from almost anywhere on Pearson Realize™.

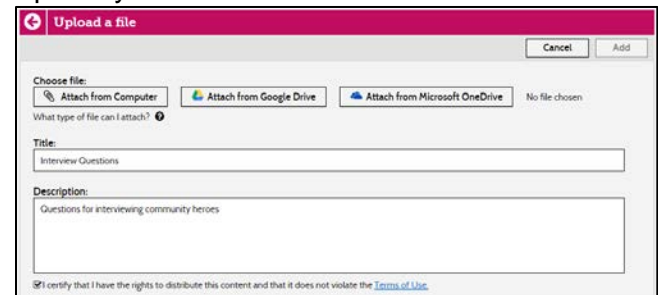
Locate a content item you want to add to your playlist. Click **Add to Playlist**.



Add custom content to your playlist.



Upload your own custom content.



Once the content has appeared in My Library, click to show the options. From this menu, select **Add to Playlist** to move the content to an existing playlist or start a new playlist.

NOTE: To explore different features on Pearson Realize, visit the other **Digital Paths** on MyPearsonTraining.com.